



Not to scale.

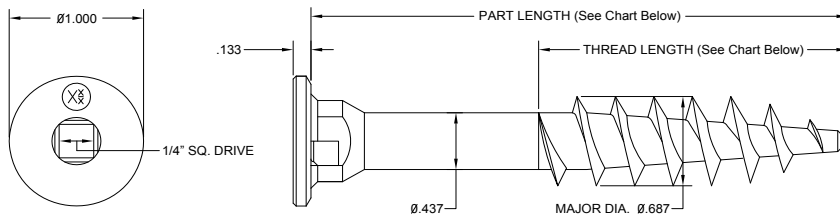
PRODUCT DESCRIPTION

The TRUFAST® TL Fastener is designed to mechanically attach rigid insulation board and single-ply membrane to structural cement wood fiber, gypsum and lightweight insulating concrete roof decks. It features a high thread profile with a tapered root diameter and sharp point. Its unique design allows it to penetrate the roof deck and progressively compact the base material, creating a stronger hold in weak material. The TL Fastener is used in conjunction with the TRUFAST 2" TL Seam Plate and 3" TL Insulation Plate.

APPROPRIATE ACCESSORIES

Use with TRUFAST TLP-3 Insulation Plate and TLP-2 Seam Plate.

PRODUCT SPECIFICATIONS



PRODUCT SELECTION

Part No.	Part Length		Thread Length		Pkg. Qty.	Pkg. Wt.	Pallet Qty.
TL-2000	2"	50.8 mm	1.447"	36.8 mm	500/Carton	11.0 lbs.	27,000
TL-2500	2-1/2"	63.5 mm	1.947"	49.5 mm	500/Carton	13.0 lbs.	27,000
TL-3000	3"	76.2 mm	2.300"	58.4 mm	500/Carton	15.0 lbs.	27,000
TL-3500	3-1/2"	88.9 mm	2.300"	58.4 mm	500/Carton	17.0 lbs.	27,000
TL-4000	4"	101.6 mm	2.300"	58.4 mm	500/Carton	18.0 lbs.	27,000
TL-4500	4-1/2"	114.3 mm	2.300"	58.4 mm	500/Carton	21.0 lbs.	27,000
TL-5000	5"	127.0 mm	2.300"	58.4 mm	500/Carton	22.0 lbs.	27,000
TL-5500	5-1/2"	139.7 mm	2.300"	58.4 mm	500/Carton	25.0 lbs.	27,000
TL-6000	6"	152.4 mm	2.300"	58.4 mm	500/Carton	27.0 lbs.	27,000
TL-6500	6-1/2"	165.1 mm	2.300"	58.4 mm	500/Carton	30.0 lbs.	27,000
TL-7000	7"	177.8 mm	2.300"	58.4 mm	250/Carton	16.0 lbs.	13,500
TL-7500	7-1/2"	190.5 mm	2.300"	58.4 mm	250/Carton	17.0 lbs.	13,500
TL-8000	8"	203.2 mm	2.300"	58.4 mm	250/Carton	17.5 lbs.	13,500
TL-8500	8-1/2"	215.9 mm	2.300"	58.4 mm	250/Carton	19.0 lbs.	13,500
TL-9000	9"	228.6 mm	2.300"	58.4 mm	250/Carton	20.0 lbs.	13,500
TL-9500	9-1/2"	241.3 mm	2.300"	58.4 mm	250/Carton	21.0 lbs.	13,500
TL-10000	10"	254.0 mm	2.300"	58.4 mm	250/Carton	22.0 lbs.	13,500
TL-11000	11"	279.4 mm	2.300"	58.4 mm	250/Carton	25.0 lbs.	13,500
TL-12000	12"	304.8 mm	2.300"	58.4 mm	250/Carton	26.0 lbs.	13,500
TL-13000	13"	330.2 mm	2.300"	58.4 mm	250/Carton	28.0 lbs.	13,500
TL-14000	14"	355.6 mm	2.300"	58.4 mm	250/Carton	29.0 lbs.	13,500

CODE APPROVALS & LISTINGS

FM Global



Miami-Dade County



Florida Building Code

FL#: 4500

MATERIAL SPECIFICATIONS

Fastener Body:

Reinforced Nylon

PERFORMANCE DATA

Property	Standard	Average Ultimate Value
Shear Strength	NASM 1312-20	875 lb. (thread zone)

Average Ultimate Pullout Values

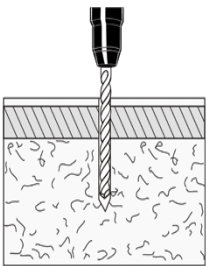
Substrate	Pre-Drill Dia.*	Min. Embedment Depth	Pullout (lbf.)
Tectum™	N/A	1-1/2"	280
		2"	440
		2-1/2"	595
3" Insulrock	5/16"	2-1/2"	365
Poured Gypsum	3/8"	2"	540

* A pre-drilled 5/8" clearance hole is necessary only when plywood or other rigid materials are fastened to a roof deck. A plate is not required in this application.

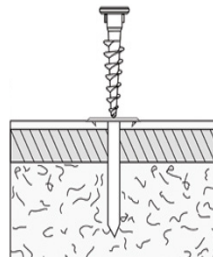
INSTALLATION GUIDELINES

Using the 1/4" drive bit provided and an electric impact tool that provides a high torque and relatively low rpm, install the fastener into the deck. A heavy-duty variable speed screw gun operated at a low speed is also acceptable. Pre-drilling is normally not required for installation into cement wood fiber decks such as Tectum®. Decks such as Insulrock may require

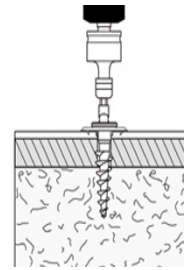
a 5/16" pre-drilled hole. Gypsum and lightweight insulating concreted decks should be pre-drilled using a 3/8" or 7/16" carbide tipped bit. Larger carbide tipped bits up to 1/2" dia. can be used in denser materials. The drill bit size to be used should be determined during the job site test.



If pre-drilling is required, drill a hole into the base material to a depth 1/2" greater than the embedment required.



Place the TRUFAST TL Plate on the insulation (TL 3" Plate) or seam (TL 2" Plate).

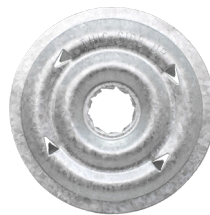


Drive the TL Fastener through the plate into the base material until the head of the fastener is properly seated in the plate. The plate should be seated securely against the insulation or membrane. Do not overdrive.

PRODUCT SELECTION — MPTL PLATES



2" TL Seam Plate
 Thickness: 0.030"
 Diameter: 2"
 Hole Diameter: 0.625"
 Coating: AZ-55 Galvalume



3" TL Insulation Plate
 Thickness: 0.017"
 Diameter: 3"
 Hole Diameter: 0.625"
 Coating: AZ-55 Galvalume

Size	Part No.	Pkg Qty/Type	Wgt/Pkg	Pallet Qty.
2" TL Seam Plate	MPTL-2000	1000 / Carton	14.0 lbs.	48,000
3" TL Insulation Plate	MPTL-3000	500 / Carton	17.5 lbs.	36,000

Bulletin No. TF-22077, Rev. 04/2024

DISCLAIMER

The information provided here is subject to change without notice. The performance specifications published in this TRUFAST® product literature are based on controlled laboratory tests and are intended as a guideline only. They are not guaranteed in any way by the ALTENLOH, BRINCK & CO US, INC., since building design, engineering, and construction,

including workmanship and materials, are beyond the control of the manufacturer. The manufacturer recommends that pull-out tests be conducted to verify the substrate provides adequate pull-out values.