

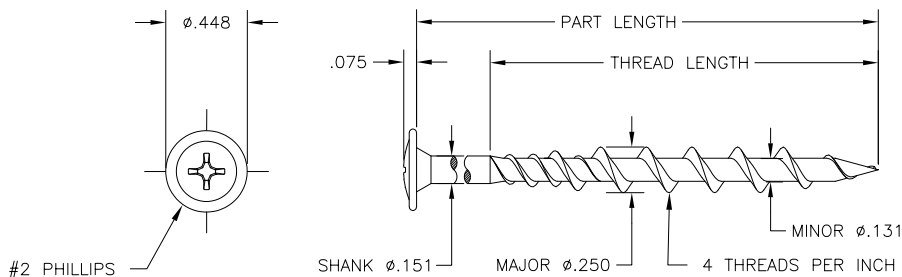


Enlarged to show detail.  
Not to scale.

### PRODUCT DESCRIPTION

TRUFAST® VERSA-FAST® Fasteners are engineered to secure insulation, cover boards and base sheets to lightweight insulating concrete (LWIC) and gypsum decks. The VERSA-FAST Fastener features an exclusive thread design engineered for exceptional pull out. When used in conjunction with the VERSA-FAST Metal Plates, multiple fasteners can be installed to achieve the required minimum pull out.

### PRODUCT SPECIFICATIONS



### CODE APPROVALS & LISTINGS

FM Global



Miami-Dade County



Florida Building Code

FL# 4500

### MATERIAL SPECIFICATIONS

Material: SAE C1022, heat treated

Coating: Tru-Kote™ Epoxy E-Coat

### APPROPRIATE ACCESSORIES

Use with 3" TRUFAST VERSA-FAST Metal Plates (see reverse for more details on metal plates).

### PRODUCT SELECTION

Part No.	Part Length	Thread Length	Pkg. Qty.	Pkg. Wt.	Pallet Qty.
VF-2250	2-1/4" (57.2 mm)	2.125" (Full) (54.0 mm)	1,000/Bucket	16.0 lbs.	80,000
VF-3250	3-1/4" (82.5 mm)	2.125" (54.0 mm)	1,000/Bucket	20.2 lbs.	80,000
VF-4250	4-1/4" (107.5 mm)	2.125" (54.0 mm)	1,000/Bucket	24.4 lbs.	80,000
VF-5250	5-1/4" (133.4 mm)	2.125" (54.0 mm)	1,000/Bucket	28.6 lbs.	80,000
VF-6250	6-1/4" (158.8 mm)	2.125" (54.0 mm)	1,000/Bucket	32.8 lbs.	80,000
<b>NEW!</b> VF-7250	7-1/4" (184.2 mm)	2.125" (54.0 mm)	500/Bucket	19.2 lbs.	30,000
<b>NEW!</b> VF-8250	8-1/4" (209.6 mm)	2.125" (54.0 mm)	500/Bucket	21.3 lbs.	30,000

### PERFORMANCE DATA

Property	Standard	Average Ultimate Value
Tensile Strength	ASTM F606-10	1910 lbf.
Shear Strength	AISI S904-13	1355 lbf. (thread zone)
Corrosion Resistance	FM 4470, ASTM D6294, DIN 50018	< 15% Red Rust after 30 cycles

Substrate	Average Ultimate Pullout
Aggregate Light Weight Insulating Concrete (LWIC) (63 pcf. density, 370 psi. compressive strength)	190 lbs. (one fastener per plate)
Cellular Light Weight Insulating Concrete (LWIC) (41 pcf. density, 290 psi. compressive strength)	320 lbs. (one fastener per plate)
Gypsum (93 pcf. density, 340 psi. compressive strength)	350 lbs. (one fastener per plate)

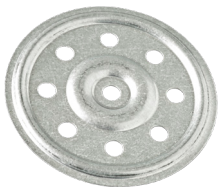
### PRODUCT DESCRIPTION

TRUFAST<sup>®</sup> VERSA-FAST<sup>®</sup> Metal Plates are used to mechanically attach insulation, cover boards and base sheets to lightweight insulating concrete (LWIC) and gypsum decks. The VERSA-FAST Metal Plate is a circular design with one center fastener placement hole and eight equally spaced fastener placement holes around the perimeter of the plate allowing for maximum versatility. Required pullout values can be achieved by installing multiple VERSA-FAST Fasteners in one VERSA-FAST Metal Plate.

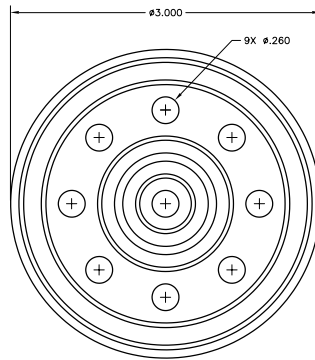
### APPROPRIATE ACCESSORIES

Use with TRUFAST<sup>®</sup> VERSA-FAST<sup>®</sup> Fasteners.

### PRODUCT SELECTION



**VERSA-FAST<sup>®</sup> Metal Plate**  
 Thickness: 0.017"  
 Diameter: 3"  
 Hole Diameter: 0.260"  
 Coating: AZ-50 Galvalume



### CODE APPROVALS & LISTINGS

FM Global



### MATERIAL SPECIFICATIONS

Metal with AZ-50 Galvalume Coating

Size & Type	Part No.	Pkg. Qty.	Pkg. Wt.	Pallet Qty.
3" VERSA-FAST <sup>®</sup> Metal Plate	MPVF-3000	1000/Bucket	32 lbs.	40,000

### INSTALLATION GUIDELINES

**For LWIC Decks (Aggregate & Cellular) and Gypsum Decks-** Using the #2 Phillips drive bit provided and 0-1500 rpm screw gun, install the VERSA-FAST Fastener and VERSA-FAST Metal Plate through the substrate and into the approved deck. The fastener shall penetrate the approved deck a minimum of 2". Care should be taken to orient the fastener perpendicular to the deck and not to overdrive the fastener to prevent damage to the insulation, cover board or base sheet. Care should also be taken to avoid stripping out the fastener by over driving the fastener into the LWIC or Gypsum deck.

VERSA-FAST<sup>®</sup> Metal Plates are designed for use with VERSA-FAST<sup>®</sup> Fasteners. Depending on site specific pullout values, more than one VERSA-FAST Fastener may be required to achieve the desired pullout resistance. Multiple fasteners may be installed in the VERSA-FAST Plate increasing the amount of force required to pull the plate/fastener assembly out of the approved deck. Contact Trufast Technical Services for assistance.



Four (4) of many installation configurations available when using the VERSA-FAST Fasteners & Metal Plates

Bulletin No. TF-22041, Rev. 2025-07

### DISCLAIMER

The information provided here is subject to change without notice. The performance specifications published in this TRUFAST<sup>®</sup> product literature are based on controlled laboratory tests and are intended as a guideline only. They are not guaranteed in any way by the ALTENLOH, BRINCK & CO. US, INC., since building design, engineering, and construction, including workmanship and

materials, are beyond the control of the manufacturer. The manufacturer recommends that pull-out tests be conducted to verify the substrate provides adequate pull-out values.